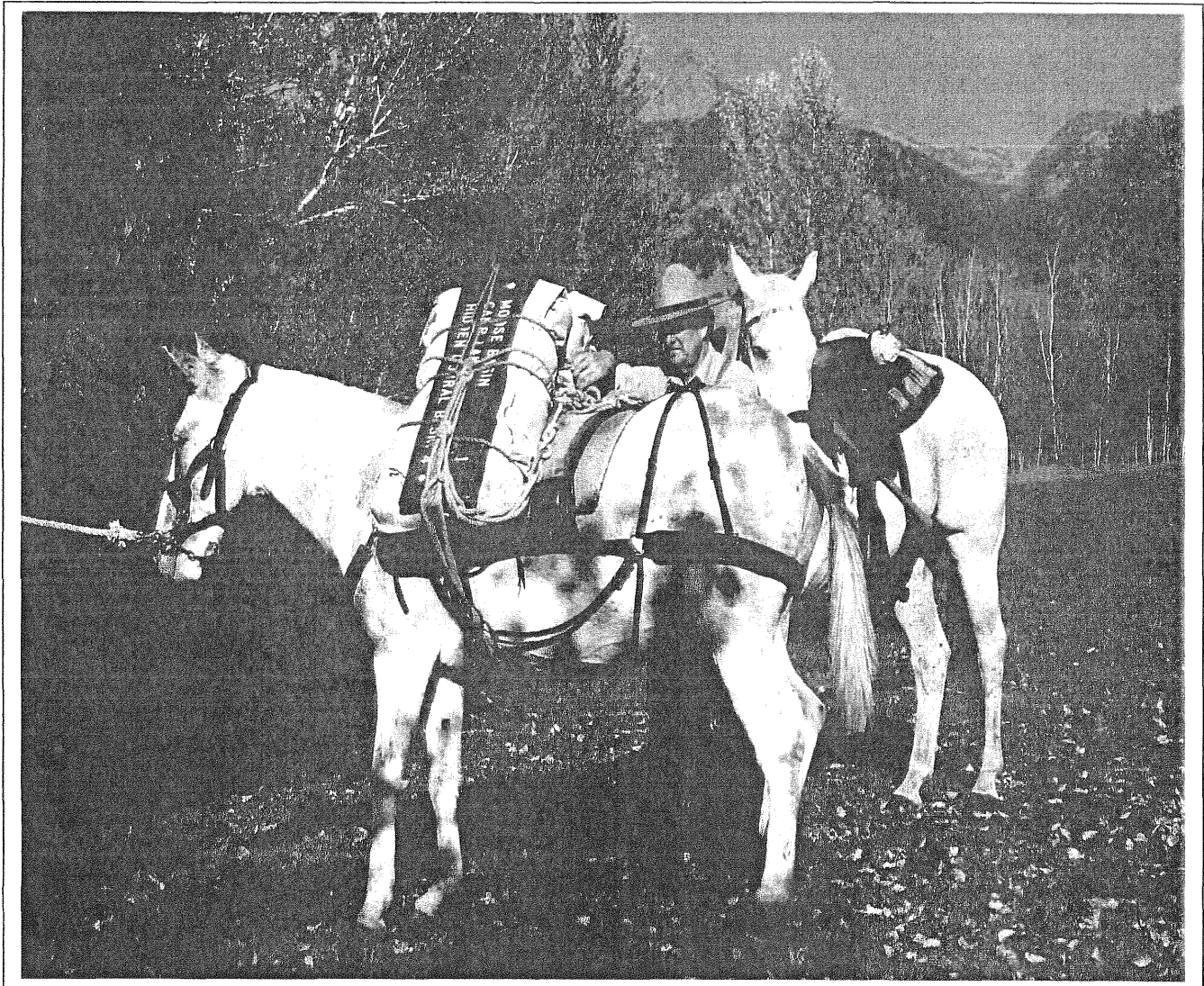


**Effective Stock Use and Management  
Pilot Training Program  
for  
Line Officers, Program Managers, and Others**

**Salmon - Challis National Forest  
May 23 & Optional 24, 2005**



**Basic Information and Tentative Schedule for Pilot Course.**

## Program Outline:

Objectives, Introductions, and Schedule: (Full Group Discuss and Modify Items as Desired)	8:00 - 8:30
Role of Saddle and Pack Stock in Forest Service Work: (Full Group Discussion)	8:30 - 9:00
1. Traditions - Something of Value? 2. Regional, Forest, and District Perspectives.	
Knowing the Animals: (Small Working Groups - Hands On)	9:00 - 9:45
1. Horse and Mule Behavior. 2. Body Language, Eyes, and Dominance. 3. Basic Safety Considerations Around Stock. 4. Routine and Emergency Care of Stock.	
Riding Equipment Costs and Purpose: (Small Working Groups - Hands On)	9:45 - 10:30
1. Personal Gear. 2. Tack for Riding. 3. Proper Saddling and Adjustments: A. Catching, Leading, and Tying. B. Pad, Saddle, and Bridle. C. Saddlebags and Slickers. D. Mounting, Steering, and Brakes.	
Packing Equipment Costs and Use: (Small Working Groups - Hands On)	10:30 - 12:00
1. Decker Packsaddle. 2. Proper Saddling and Adjustments: A. Catching, Leading, and Tying. B. Assembling the Load. (1) Using Panniers. (2) Mantied Loads. C. Attaching Loads to Horses or Mules. D. Leading Pack Animals.	
Lunch Available on Site.	12:00 - 1:00

Choices and Alternatives in Work Accomplishment:

1:00 - 1:30

(Full Group Discussion)

1. Have Specific Work Plans.
2. Understand What the Work Entails.
3. Assess Unit / Program Capabilities.
4. Adjust if Needed.
5. Time and Motion is Efficiency.
6. Fixed Costs.
7. Work Costs.

Packing and Leading - Obstacle Course.

1:30 - 3:30

(Small Working Groups)

Public's and Employees' Image of the Forest Service:

3:30 - 4:00

(Full Group Discussion)

1. Good Work Accomplishment.
2. Real on-the-ground Things.
3. Competence and Tax Dollars.
4. Visibility.

Acquiring Saddle and Pack Stock:

4:00 - 4:30

(Full Group Discussion)

1. Forest Service Owned.
2. Employee Owned - Equipment Agreements.
3. Lease or Rental.
4. Contract the Task, Job, or Work.
5. Volunteers.

Evening Session

6:00 - 7:30

1. Acquiring and Managing Stock.
  - A. Forest Service Owned.
  - B. Employee Owned - Equipment Agreements.
  - C. Lease or Rental.
  - D. Contract the Task, Job, or Work.
  - E. Volunteers
2. Visit by the Old Ranger.
  - A. Original Needs and Expectations.
  - B. The Historic Ranger Exam - and Why.
  - C. Knowing the Ropes - and the Diamond Hitch.
3. Tomorrow's Optional Day Arrangements.

